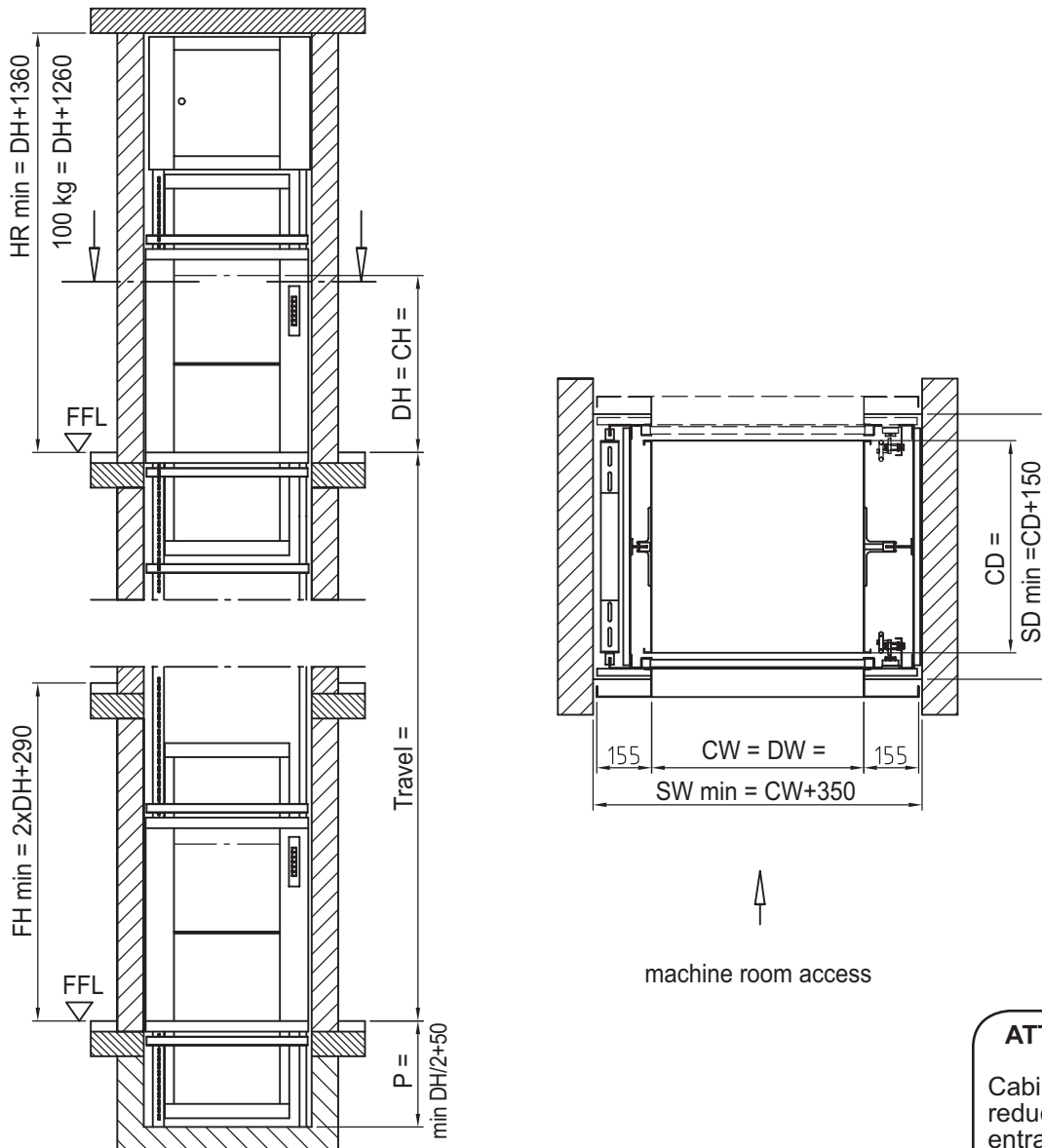


Well dimensions are absolute min. plumbed dimensions



ATTENTION:

Cabin protection reduces clear entrance openings resp. shaft sizes (see part 10)

Accessible rooms underneath shaft inadmissible

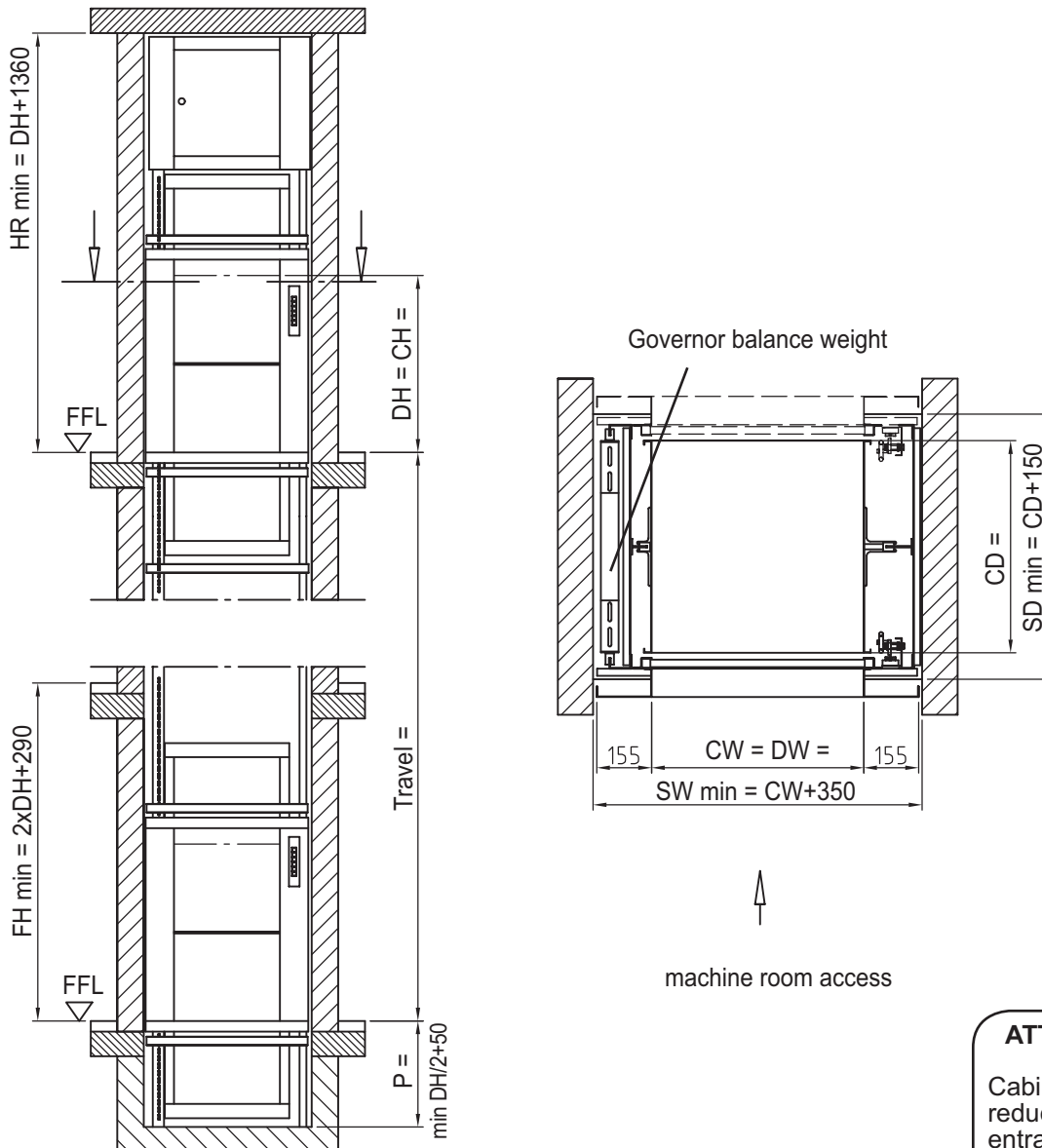
Cabin width and -depth available in increments of 50 mm
 Cabin height available in increments of 100 mm

- | | | | |
|-----|---|--|---|
| CW | = | cabin width | min. 500 - max. 1000 mm |
| CD | = | cabin depth | min. 600 - max. 1000 mm |
| CH | = | cabin height | min. 800 - max. 1200 mm |
| DW | = | door width | = Cabin width |
| DH | = | door height | = Cabin height |
| P | = | pit | = min. DH/2 + 50 |
| SW | = | Shaft width | = plumbed min. dimensions |
| SD | = | Shaft depth | = plumbed min. dimensions |
| HR | = | Headroom | = clear height of top floor FFL - underside ceiling |
| FFL | = | finished floor level | |
| FH | = | Floor to floor height on landing doors in line | |



Prices and specification see back side

Well dimensions are absolute min. plumbed dimensions



ATTENTION:

Cabin protection reduces clear entrance openings resp. shaft sizes (see part 10)

Shaft floor to be constructed according to layout drawing

Cabin width and -depth available in increments of 50 mm
 Cabin height available in increments of 100 mm

- | | | | |
|-----|---|--|---|
| CW | = | cabin width | min. 600 - max. 1000 mm |
| CD | = | cabin depth | min. 700 - max. 1000 mm |
| CH | = | cabin height | min. 800 - max. 1200 mm |
| DW | = | door width | = Cabin width |
| DH | = | door height | = Cabin height |
| P | = | pit | = min. DH/2 + 50 |
| SW | = | Shaft width | = plumbed min. dimensions |
| SD | = | Shaft depth | = plumbed min. dimensions |
| HR | = | Headroom | = clear height of top floor FFL - underside ceiling |
| FFL | = | finished floor level | |
| FH | = | Floor to floor height on landing doors in line | |



Prices and specification see back side